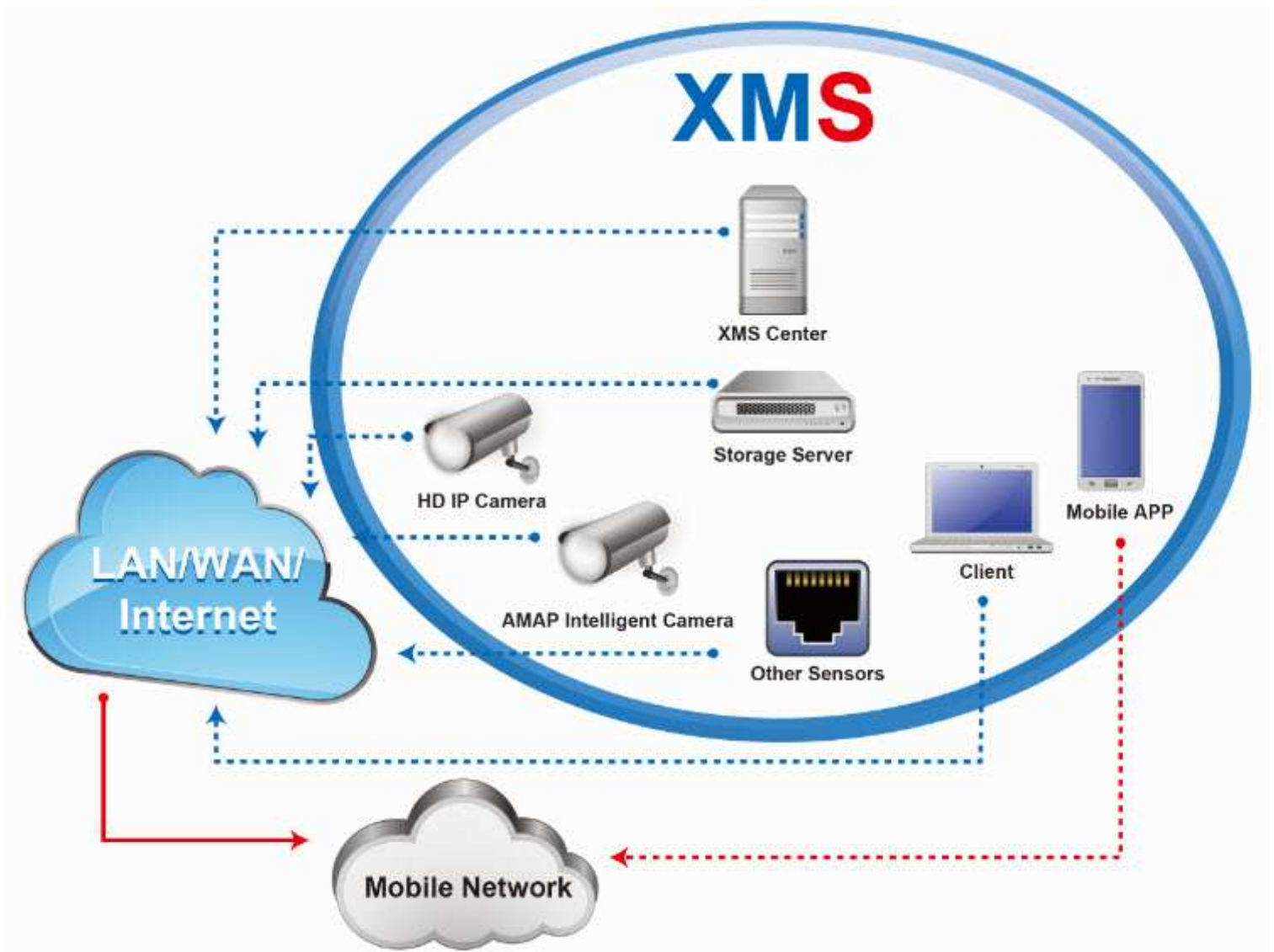


XMS

Intelligent Video Management & Application System

- Sophisticated Video Management
- Intelligent Video Analytic
- Intelligent Task Operation
- Cost-effective Architecture



Entities



XMS: Contains six main entities working together.

MEGA: All system resource and architecture are managed by MEGA. MEGA supports standing-alone system, multi-servers system and Cloud system with embedded management protocols.

RACE: Data related to different applications including real-time application can be correlated by RACE to contribute new applications. A standard application generation process is used to make it easy.

VMS Set: Including classic and clean VMS functionalities like video storage, replay, preview and so on. Combined with

other entities, VMS set works as an assistant.

LIVE+: Core IVA engine to run catered analysis of video. A specified protocol defines how the different IVA modules communicate each other.

AMAP: Intelligent devices with LIVE+ embedded. As a powerful member in XMS, AMAP make it possible to run mega analysis for a huge task.

SILVER: Tailored application set for different vertical solution. Based on a unique development tool, SILVER gives more possibility to user to make system beneficial.

Intelligent Video Analytics

Intelligence is the core of XMS. As the main supplier of IVS algorithm, Multitek equips the system with mature and site-proven IVS applications to improve system operational intelligence. More than 60 different basic intelligent applications are in choice. Intelligence helps users work more efficiently and run better.



CAP & MCC

Auto-PTZ Tracking & Relay Tracking System.



License Plate Recognition

Working in three modes: parking toll, traffic monitoring and driving recording.



Intrusion Detection

People or vehicle enter forbidden area through the border.



Tracking at night, by IR camera.



Parking Entry.



In harbor, a long vehicle is detected and marked in red.



Transportation Violation Detection

Focus on road violation like run-a-red-light, wrong-way, parking violation and turning violation.



Fire & Smoke Detection

Detecting early fire and smoke when urgent situation especially for indoor and city site.



Object Status Change Detection

Alarm for object left or object disappearance.



Run-a-red-light.



Box abandoned from a motor.



Warehouse fire.



Crowd Density Detection & Analysis

Sensitive to dangerous situation of crowd.



The Aged Care

Detecting dangerous status of the aged, falling down and no-moving.



Abnormal Behavior Detection

Focusing on the abnormality of people behavior of wrong-way, loitering, dual-tripwire.



Red triangle: high density point.



Falling-down Alarm



Loiter people out of the wall.



Video Diagnosis

Detect quality problems of video.



People Counting

Both-way counting at a accuracy rate of 85% up.



Face Detection & Analysis

Detection face and identify gender and age.



a. Brightness fault b. Noise c. Color Error d.

Camera tempering



Counting at underground entry.



Office management.

Task-oriented GUI

XMS believes user wants to be with a clean system. Good system will not have to be complicated. XMS is used for perform tasks and enables users to focus on the root purpose: securing your perimeter, getting business controlled, helping people find the lost and so on. Site-proven IVA technologies and comfortable GUI design and video operations like storage, playback or distribution are organized uniquely for specified task approaching. XMS saves more time and more resource, and helps more when solving problem, XMS introduces intelligence-flow technology into GUI design and make different feeling.

Layered Alarm Unified

The screenshot shows the XMS Alarm Center interface. It features a 'MULTIPLAYER' window with four video channels (Channel_01 to Channel_04) displaying boat footage. A 'RESULTS LIST' window shows a table of alarm events. A 'Target Picture' window displays a zoomed-in view of a boat with a red bounding box. Below the video windows is a 'Warning List/Ship: 14' table.

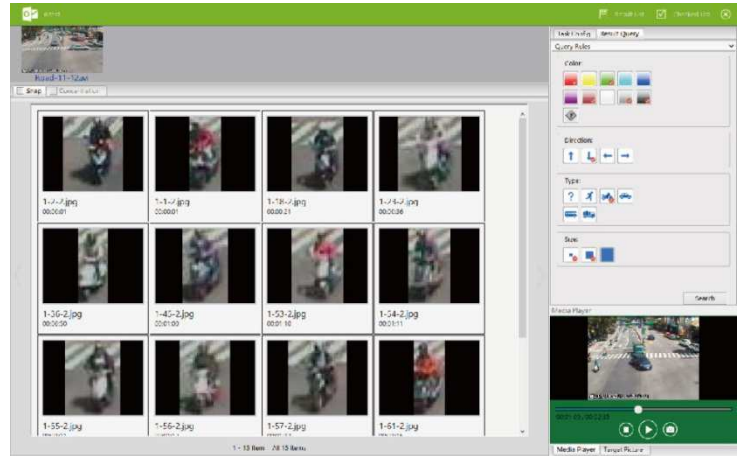
LN	BID	Owner	TM	Location	Status	Time
14	WURRT3	Jiulang Fishing Co.Ltd		NFB-131	□	2013-04-25 00:03:38
13	HL3945	Wanefei Fishing Co.		NFB-131	□	2013-04-25 00:03:30
12	EL382	Jiulang Fishing Co.Ltd		NFB-131	□	2013-04-25 00:03:28
11	HL3409	Lobang Fishing Co.		NFB-131	□	2013-04-25 00:03:24

Alarm center is one of main entry of XMS. All information are listed here and necessary text description and image and video links are obtained in same window. Important information about statistics data, system health, IVS event and system management can be found together or separately. XMS allows dedicated alarm center for specified type of alarm. For example, one is for normal alarms, but another is only for event of specified boat appearance.

XMS

Fast Search

With AMAP cameras, XMS Supports a very fast target search. No pre-set configuration is required because we understand that nobody knows what will happen when it does not happen. So XMS generates video index into system database real-time. Searching is based on filters including color, type, speed, trail, size, location and event. Incredible searching speed can be achieved and recorded at exceeding 100Z speed though it is possible to be done whenever you want.



System Health Center

XMS manages different type of device, application software, system platform, storage space and signals input. System Health Center is the entry to know and to maintain the system itself. Video quality failure or camera tempering are also taken as a system health event.

Auto Report Generator

Reporting Generator is designed to generate regular automatically based on video intelligence for pre-set task. Operator can create a report template by defining input of information source and format and timer, for example, you can create a report machine to summarize all intrusion events with intruders' face close-up every day and the report will be prepared in every morning before you turn on your client



DAILY SECURITY REPORT

DATA: SEP 11TH, 2013
LOCATION: F3004T CAM 12
EVENT: MOTOR INTRUSION
TASK OWNER: CHUANG HUA WEI

Result Report

1. Information Summary

Media Name	Information	Count	Status
00_20130911172341_1	Processing Time	1691s	V
	Total Result	188	V
	Selected	2	V

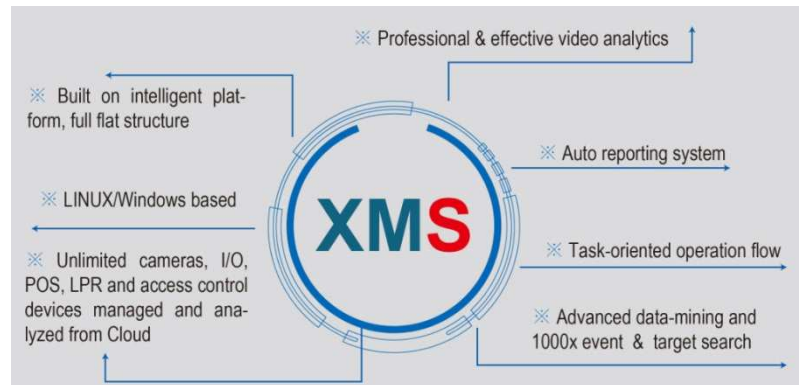
2. Show checked results

1: 0050011_00_20130911172341_11c0101.sdv

Media Info



1-11-2.jpg 1-20-2.jpg



E-mail : service@multitek.com.tw

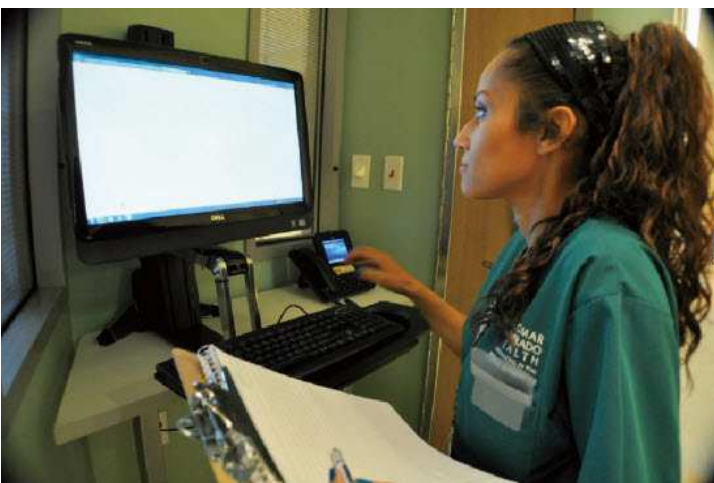
Web : www.multitek.com.tw

Vertical Solutions

With its innovative multimedia-interconnection-management platform and IVA applications, XMS is built on an easy-to-extend base. From lite package product for small shop to huge system for multi-nation enterprise, XMS runs IVS application and interconnection task on a cloud environment. Mega data analysis is expectable and affordable. XMS already serves more than 100 different industry customers like bank, retail, factory, oil transportation, border and mine etc. Customized IVA and task operation is based on XMS cost-effective architecture.

XMS Keeps Shop Operating Better

Mr. Huesu runs XMS in more than 230 shoe shops around South China. Every day, XMS supplies the summary of shop operation information including people flow chart, real-time customer faces, and employee workload. At night, Huesu quietly sleep with XMS running its advanced intrusion detection and alarm service for him. When any abnormal transaction occurring, the manager will report to Huesu immediately because the system take this POS information out and spread a SMS to supervisor. Truly believe XMS helps managing shop better.



XMS Guards The Hospital

T-hospital is the biggest public hospital central Philippine. More than two thousands of people enter this place every day and more than 500 patients are hospitalized. More than 130 cameras covering all important rooms and main passageways are guarded by XMS considering its centralized alarm for pre-defined abnormal event including people fighting, moving or stealing high-value articles and high-density crowd flow in dangerous zone. Particularly, XMS gives a one-minute search to the users to find any people

or vehicle interested upon any investigation task.

Sample Specification

System	XMS-ST08	XMS-ST16	XMS-EC	XMS-MEGA
General				
	Packaged System	Packaged System	Multi-server	Cloud-based System
Camera Channels	8	16	No-limitation	No-limitation
Camera Type	1.3M or 2M IPC	1.3M or 2M IPC	Above 1.3M IPC	Above 1.3M IPC
Camera Interface	H.264, OnVIF	H.264, OnVIF	H.264, OnVIF	H.264, OnVIF
Recording Rate	30fps@1080p per	30fps@1080p per	Camera Limitation	Camera Limitation
Re-play Rate	Up to 30fps 1080p	Up to 30fps 1080p	Camera Limitation	Camera Limitation
Internal Storage	2/4 HDD Bays	4/8 HDD Bays	HW Limitation	HW Limitation
External Storage	HW Limitation(RAID 0/1/5/10)	HW Limitation(RAID 0/1/5/10)	HW Limitation(RAID 0/1/5/10)	HW Limitation(RAID 0/1/5/10)
Live View	2*1080p-8*D1	4*1080p~16*D1	HW & License	HW & License
Web Client	Yes	Yes	Yes	Yes
Mobile Client	Yes	Yes	Yes	Yes
GIS Map	No	No	Yes	Yes
E-Map	No	No	Yes	Yes
Touch-screen Operation	No	No	Yes	Yes
Supported Languages	ENG/CHN	ENG/CHN	ENG/CHN	ENG/CHN
3 rd -party System	Yes	Yes	Yes	Yes
3 rd -party VMS	Yes	Yes	Yes	Yes
Application & Service				
Basic Intelligent	Video Diagnosis	Video Diagnosis	Video Diagnosis	Video Diagnosis
Fast Event Search	Yes(Support by AMAP Cameras)	Yes(Support by AMAP Cameras)	Yes(Support by AMAP Cameras)	Yes(Support by AMAP Cameras)
Target Flow Show	Yes	Yes	Yes	Yes
Industry Intelligent Application(Optional)	Intrusion Detection, Face Detection, License Plate Detection, People Counting, LPR, Object Missing Detection, Object Abandoned Detection, Crowd Analysis, Fire Detection, People Care, Others by customization			
Target Detail Search	No	No	Yes	Yes
Image Enhancement	No	No	Yes	Yes
Correlation Engine	No	No	Yes	Yes
Mega Space Digging	No	No	Yes	Yes
Alarm Center	1(standard)	1(standard)	Standard & multiple	Standard & multiple
Report Generator	No	No	Yes	Yes
Intelligent Video	No	No	Yes	Yes

*All data are maybe changed without notice pursuant to Multitek product management.